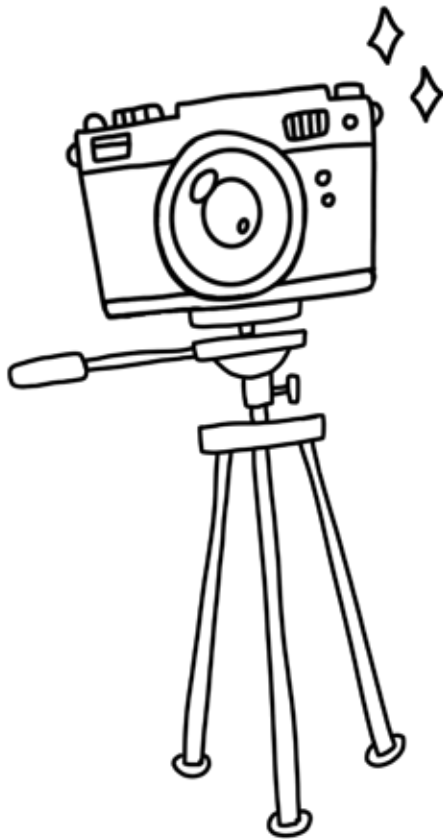


HOW TO CREATE AN ART PORTFOLIO



The basics:

- Powerpoint and Google Slides (exported to a PDF) are excellent and easy for building a portfolio in!
- In addition to images of the work provide:
 - the title
 - date created
 - mediums/materials
 - size (LxWxH)



When it comes to photographing your artwork:

DO

- Scan your smaller, flat (2D) artworks at 150–300dpi
- Use only one type of light source at a time: ideally bright, soft lighting which shows off the true colors of your artwork.
Suggestions:
 - Diffused natural light with a reflector -or-
 - Two equal light sources, such as clamp lights with the same wattage
- Use the best quality camera or smartphone available to you (and clean the lens!)
- Steady your camera with a tripod, and use a delayed shutter release
- Place your camera lens parallel to the subject to prevent distortion
- Try a reflector to bounce light back onto your subject if needed
- Use two equal light sources at 45° angles from a 2D artwork
- Play with lighting placement for 3D objects to emphasize the 3D form
Suggestions:
 - Equal 45° as in 2D -or-
 - Try a front and back light

DO NOT

- Use a flash on your camera
- Have distracting things in the background of your photos
- Forget to look into all four corners of the frame when shooting
- Give up! If your photos do not look right at first: try, try again!